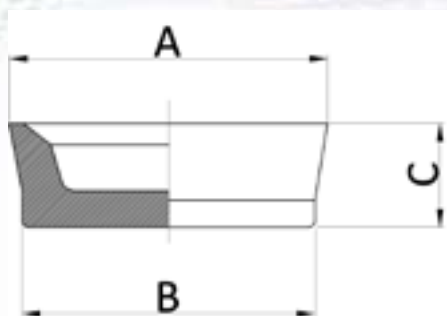


# CALOTTE A TAZZA





Consultate la tabella sottostante ordinata per valori crescenti del diametro esterno ( Misura "A" ).

Differenti tipologie di guarnizioni a tazza potete trovarle

Ø NOMINALE		Codice SAPAT	A	B	C
9/16 "	14,28	5059	Ø 15,4	Ø 13,7	6,5
5/8 "	15,87	5470	Ø 17,7	Ø 15,5	7,3
11/16 "	17,46	5469	Ø 19,1	Ø 16,8	7,1
3/4 "	19,05	5557	Ø 20,8	Ø 18,7	7,2
13/16 "	20,63	5529	Ø 21,8	Ø 20	8
7/8 "	22,22	5510	Ø 23,8	Ø 21,7	7,8
15/16 "	23,81	5358	Ø 25,4	Ø 23,2	7,5
1 "	25,4	5541	Ø 26,7	Ø 24,8	8
1 1/16 "	26,98	5312	Ø 28,5	Ø 26,5	7,6
1 3/32 "	27,78	5491	Ø 29	Ø 27,2	8
1 1/8 "	28,57	5336	Ø 30,4	Ø 28,2	7,8
1 3/16 "	30,16	5442	Ø 31,6	Ø 29,7	8
1 1/4 "	31,76	5316	Ø 33	Ø 31	8,2
1 5/16 "	33,33	5290	Ø 34,4	Ø 32,6	7,5
1 3/8 "	34,92	5014	Ø 36,5	Ø 34,1	8,2
1 1/2 "	38,1	5121	Ø 39,5	Ø 37,8	8,3
1 5/8 "	41,27	5165	Ø 42,5	Ø 40,7	9,7
1 3/4 "	44,45	5012	Ø 46,6	Ø 42,9	10
2 "	50,8	5179	Ø 53,3	Ø 49,7	11
2 "	50,8	5022	Ø 53,5	Ø 49,9	10
2 1/8 "	53,97	5023	Ø 57	Ø 52,8	9,5
2 7/32 "	56,75	5024	Ø 59,1	Ø 56	11,8
2 1/4 "	57,1	5025	Ø 60,8	Ø 56,1	11,8
2 1/2 "	63,05	5026	Ø 66,3	Ø 62,3	11,8



**Clicca sul codice SAPAT o sulla misura per visualizzare il disegno quotato.  
Clicca sul primo della lista per scorrere tutti i disegni.**

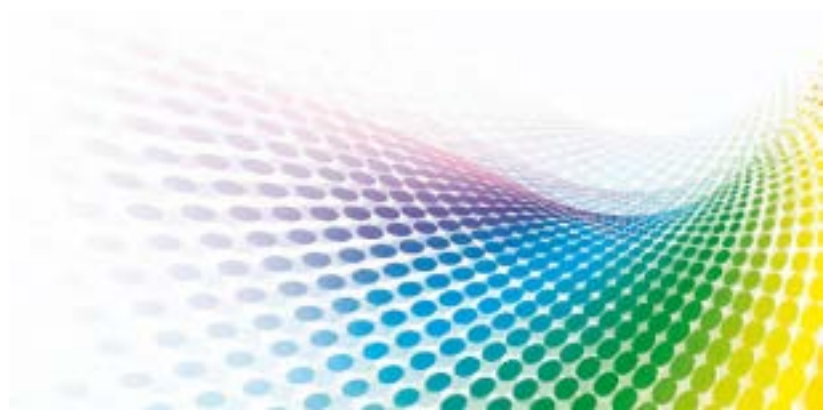
**∅ ESTERNO**

**CODICE SAPAT**

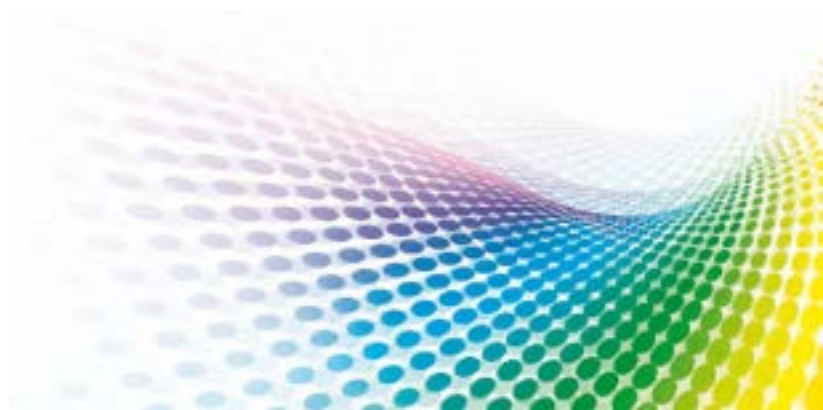
5356



5355



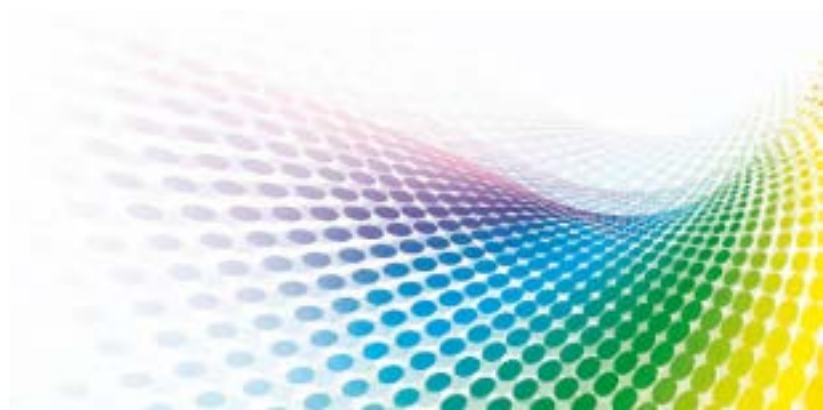
*5153*



5238



*5156*





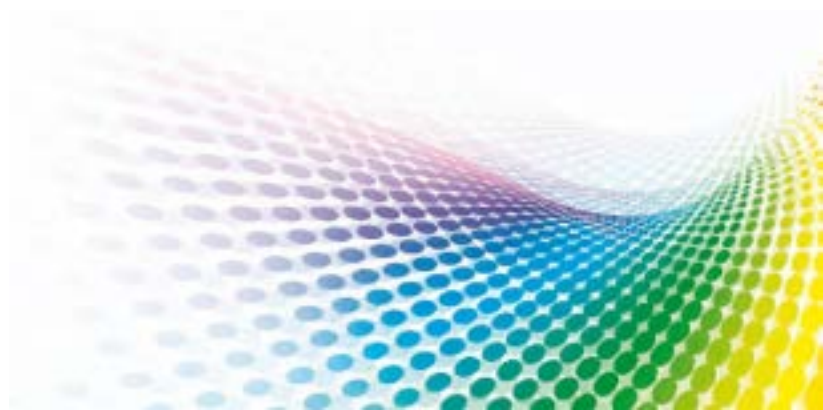
*5110*



*5124*



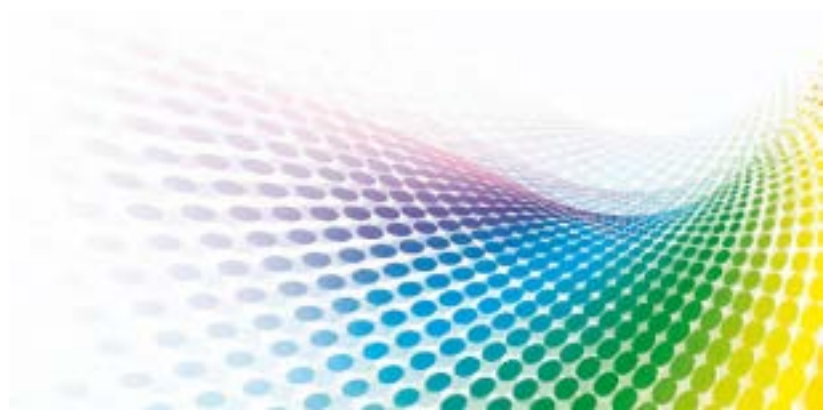
*5553*



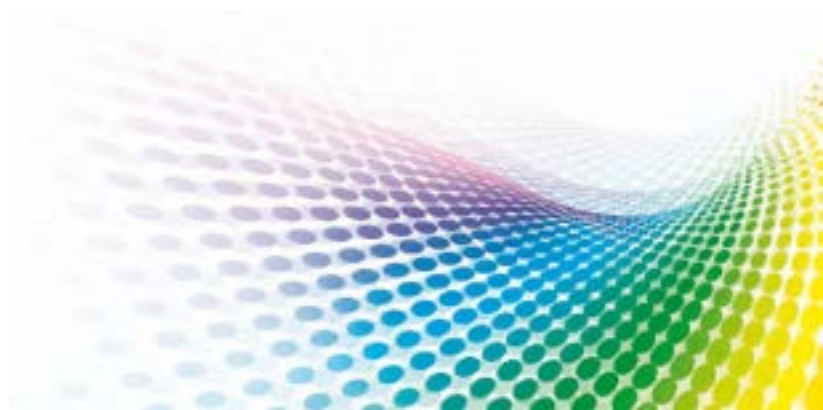
5525



5498



5289



*5129*



*5043*

